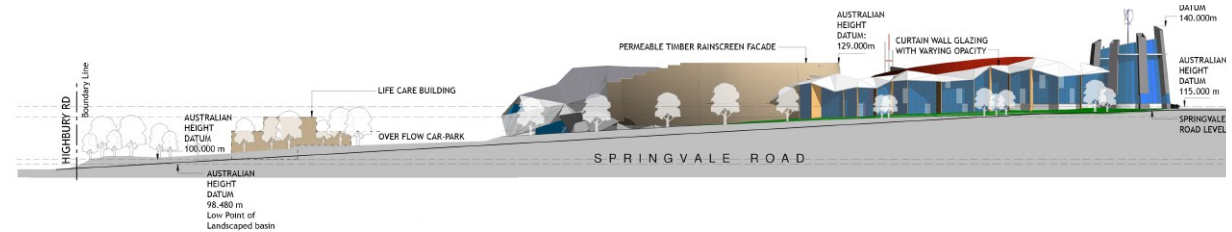


# CHURCH COMMUNITY COMPLEX MASTERPLAN Crossway, East Burwood, Vic

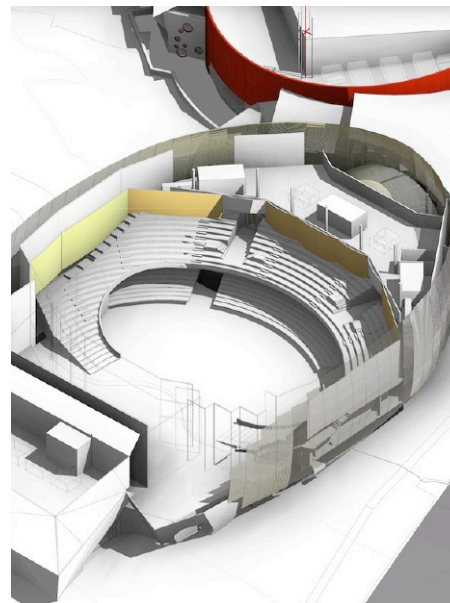


Crossway is the largest Baptist Church in Australia. It commissioned BHY to review its property on Springvale Road, East Burwood to meet its growing membership needs. The enlarged facilities include:

- Integrated complex for worship, conference, drama, concerts, meetings, counseling and incorporating performance cafe, youth centre, children's centre, family cafe with indoor play centre, sports hall, health centre, gymnasium and offices
- 2500 Seat Auditorium
- 1100 Seat Auditorium (existing)
- 500, & 300, seat Auditoria
- 250 seat Chapel (existing)
- Integrated foyers, baptistry and church street

Design features include:

- The project is based upon sustainable design principles with a brief to incorporate elements with a pay back within 10yrs. It will be developed in stages as the membership grows from its current 4000 to 10,000/wk
- The urban design principles which include a tall landmark ESD tower were developed in consultation with the council's planning authority.



project datasheet

Studio B Architects t. 03 9486 4425 [www.studiob.net.au](http://www.studiob.net.au)